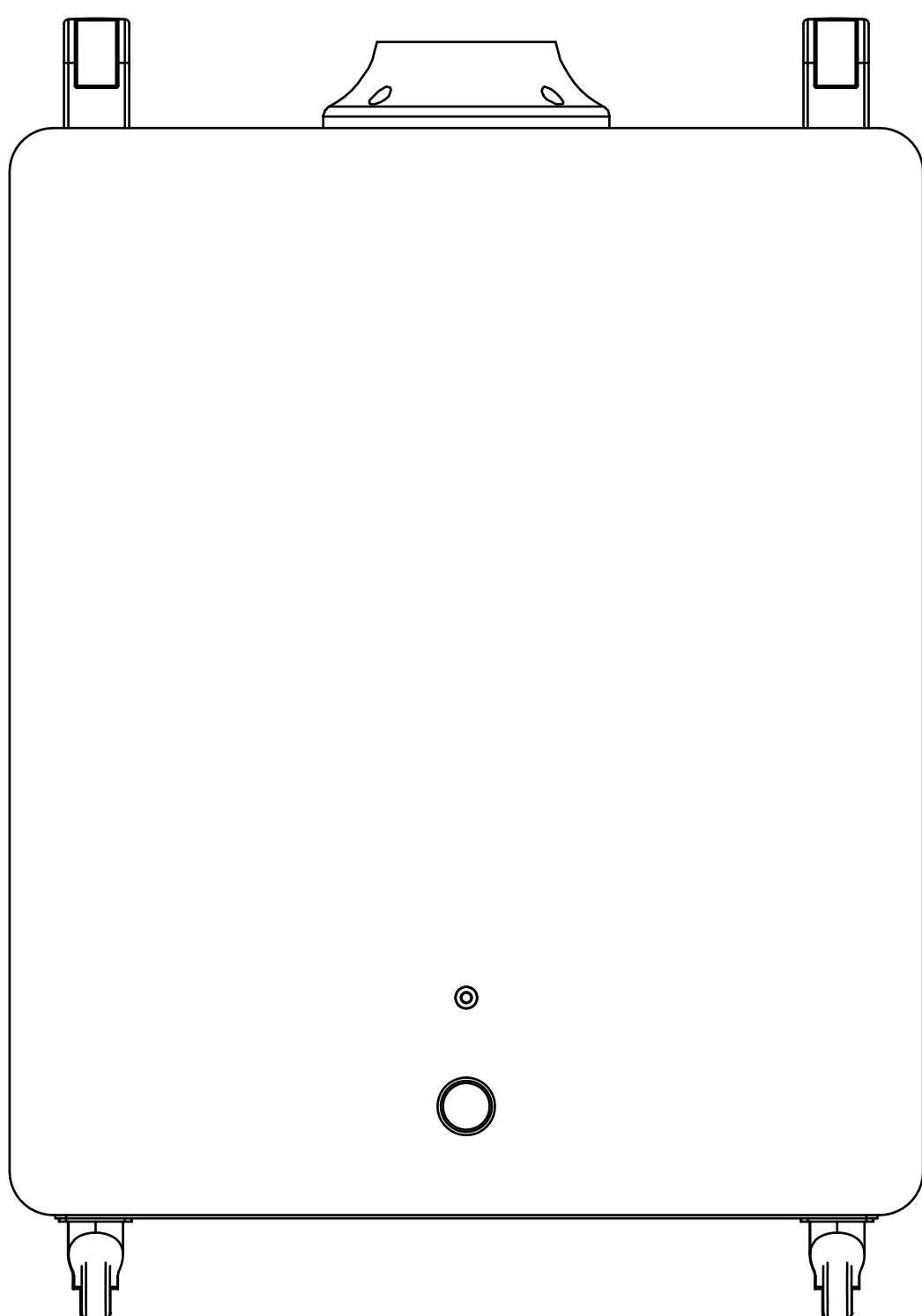


Fume and odour extractor

RW600

Instruction Manual



Thank you for purchasing our fume and odour extractor.
Please read this manual carefully
before use and keep it properly for future reference.

CONTENT

OVERVIEW	1
SPECIFICATIONS	1
PRODUCT FEATURES	2
PACKING LIST	2
STRUCTURE	3
INSTALLTION INSTRUCTIONS	4
ELECTRICAL CONFIGURATION DIAGRAM	4
FILTERS	5
CONTROL KNOB	6
FUSE REPLACEMENT	6
FAQ AND SOLUTIONS	7
WARRANTY	8

OVERVIEW

This product is a smoke and dust filtration system for laser engraving, leather engraving, melting tin furnace, silk screen printing and other occasions, which can deal with the dust, odor, toxic and harmful gases produced in the above production process, and it has good smoke and dust filtration and odor treatment function.

This product adopts multi-layer cartridge filtration, which is composed of primary filter cotton, intermediate filter and high-efficiency filter, and can effectively filter and adsorb the small amount of oil mist and dust particles above 0.3μm produced in the smoke. The purification rate of smoke filtration can reach 99.7%. The composite special-effect activated carbon in the high-efficiency filter can adsorb some common harmful gases, such as benzene, ketones, alcohols, alkanes and their mixed organic waste gas. Adopting DC brushless fan, it can realize stepless or multi-level speed regulation and has the advantages of large suction power.

The clean air after treatment can reach the emission standard and be directly discharged indoors; it does not consume indoor cold air and achieves the purpose of purification and energy saving.

SPECIFICATIONS

Series	RW600
Voltage	AC110/220V 50Hz
Power	600W
Air volume	1000m ³ /h
Negative pressure	3600Pa
Filtration	0.3μm 99.7%
Size	L490xW410xH700mm
Weight	57kg
Size of flange	φ75/110mm

PRODUCT FEATURES

CENTRIFUGAL FAN

The fan has a brushless direct current motor with a maximum service life of 40 thousand hours.
We assure the highest reliability, and our fan will require no maintenance.
The fan produces low operating noise, high rotation speed, high air volume, high air pressure, and high efficiency

FILTERS

This product adopts three-stage seven-layer cartridge filtration, respectively by the primary filter cotton, medium-effect filter, high-efficiency filter composition. It can effectively filter and adsorb a small amount of oil mist and dust particles above 0.3μm produced in the smoke, and the dust filtration and purification rate can reach 99.7%. The composite special-effect activated carbon in the high-efficiency filter can adsorb some common harmful gases, such as benzene, ketones, alcohols, alkanes and their mixed organic waste gas.

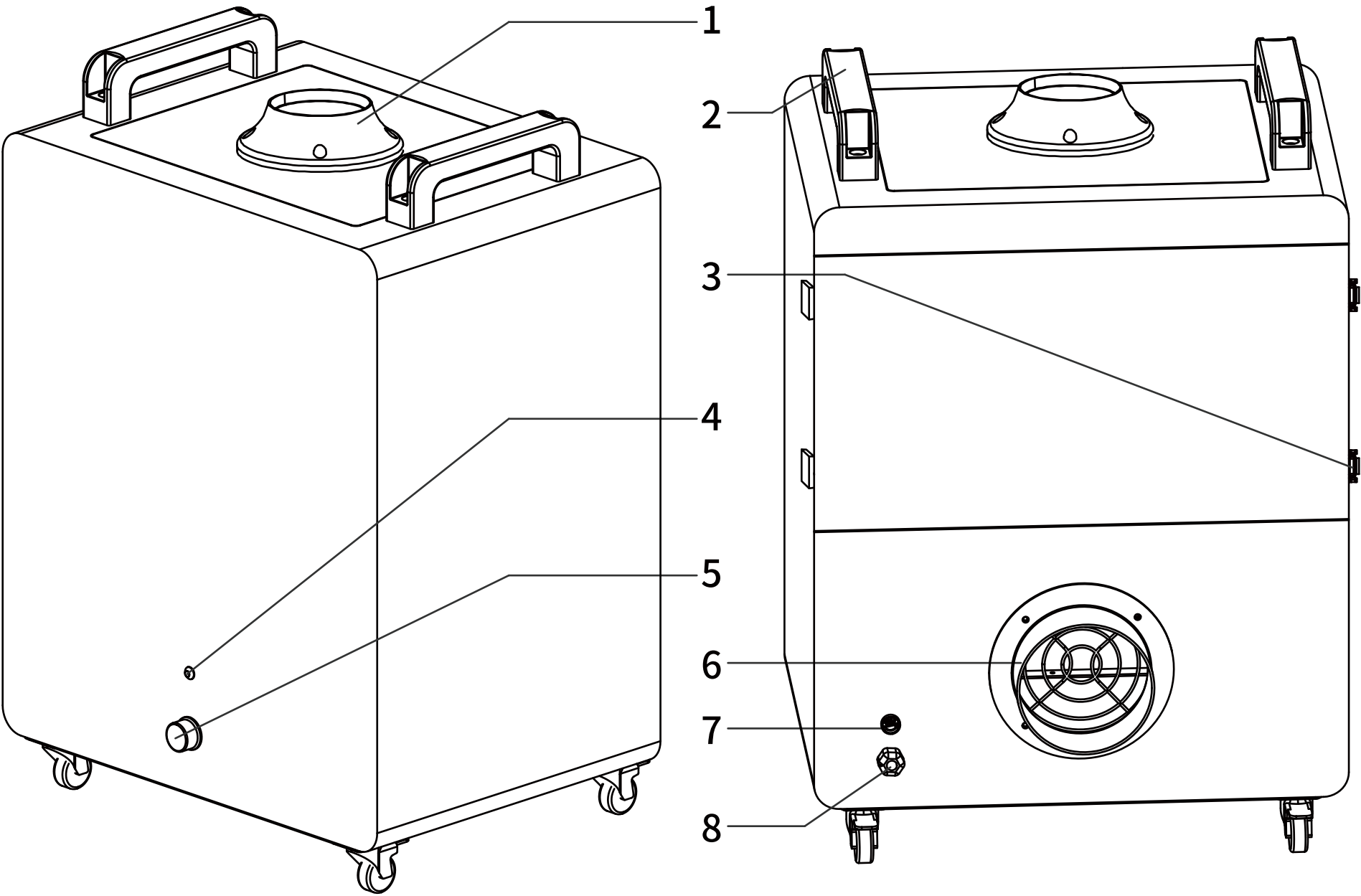
PACKING LIST

Description	QTY	Size	Model	Note
Main machine	1 set	L490xW410xH700mm	RW600	
Bamboo tube	1 or 2 pcs			
Smoke extraction hood	1 or 2 pcs			
User's Manual	1 book			
Fireproof sieve	1 pcs	L445xW375xH10mm		Optional
Primary cotton filter	1 pcs	L445xW375xH30mm		
Medium efficiency filter	1 pcs	L445xW375xH50mm		
High efficiency filter	5 pcs	L445xW375xH50mm		

Note: The filters are placed inside the machine

STRUCTURE

1	Air inlet
2	Carrying handle
3	Filter compartment lock
4	Work Indicator Light
5	Control Knob
6	Air outlet
7	Fuse Box
8	Cable gland

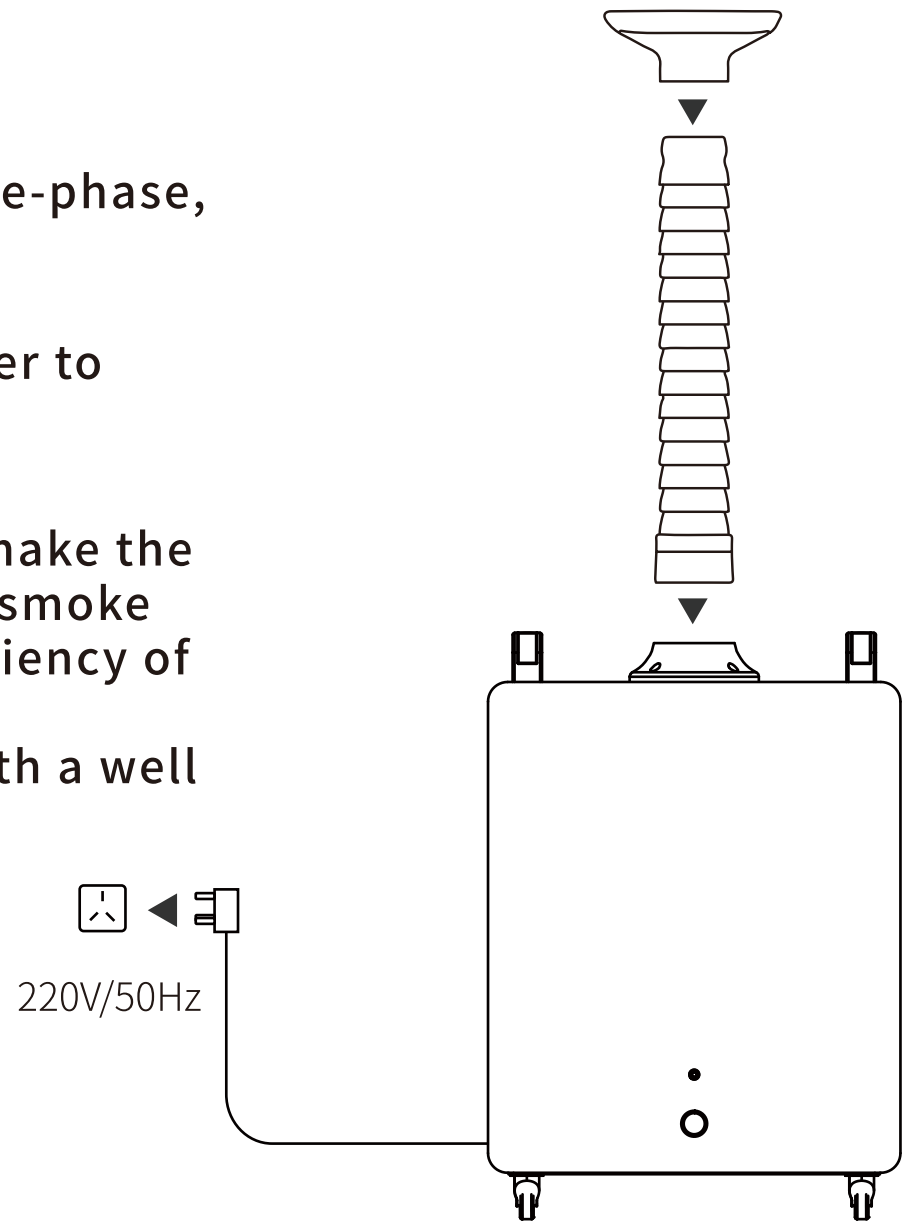


Note: Schematic diagram for single-station external exhaust models, if you receive the goods do not match this picture, please prevail in kind.

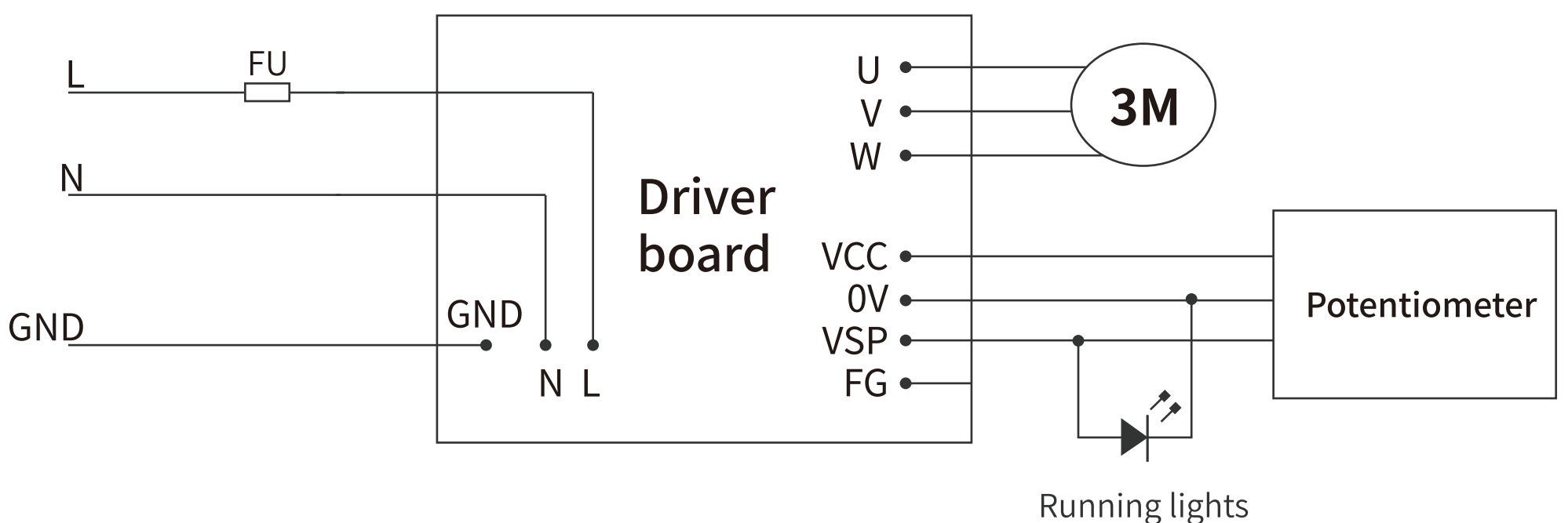
INSTALLATION NOTES

1. Plug the power cord into a 220V single-phase, three-pronged socket.
2. Turn the airflow control potentiometer to start working.

Note: When using it, you should try to make the smoking mouth directly to the point of smoke generation. In order to improve the efficiency of smoking and dust collection. The equipment must be switched on with a well grounded plug and socket.



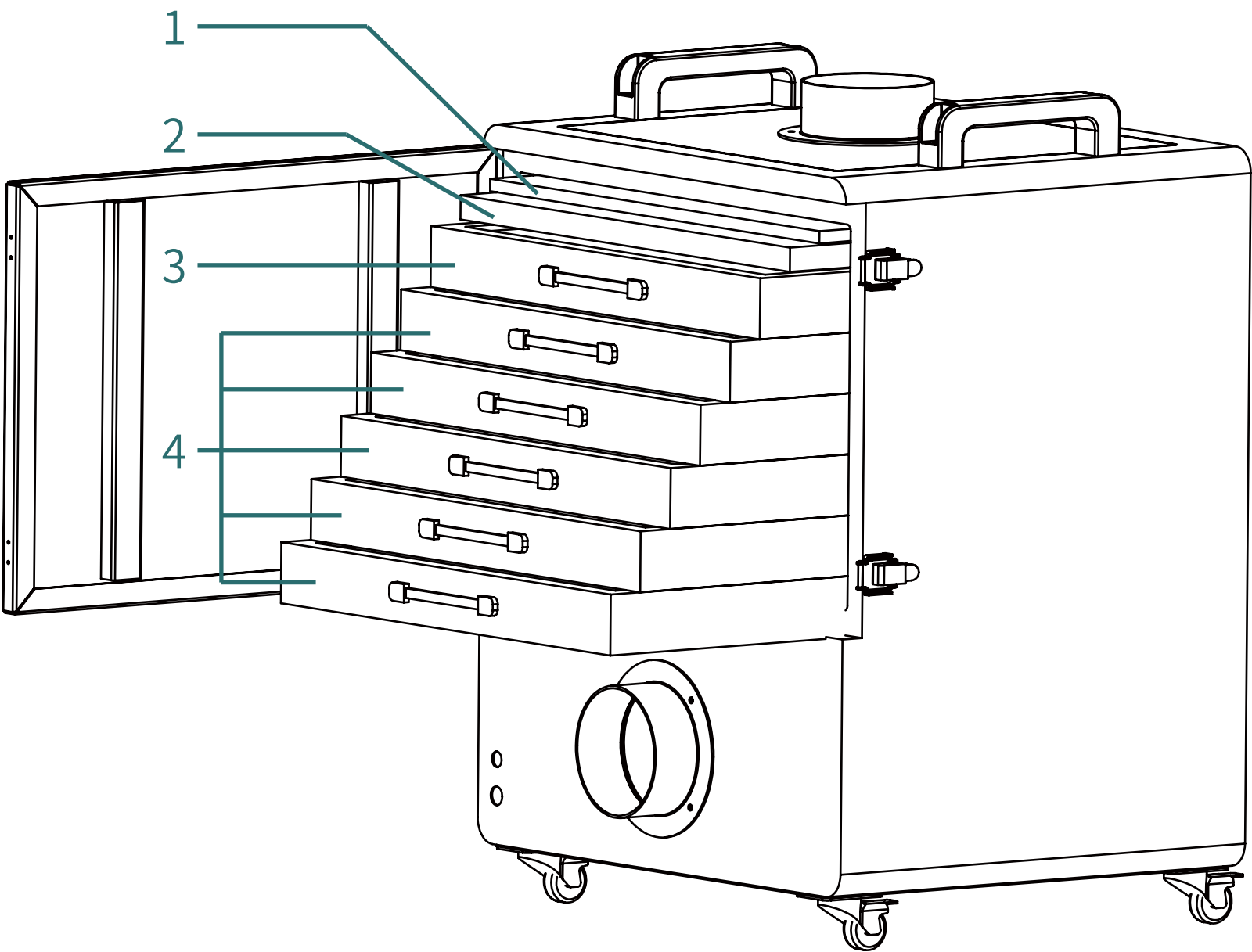
ELECTRICAL CONFIGURATION DIAGRAM



FILTERS

	Description	Replacement period	Replacing method
1	Fireproof sieve (optional)	Reuse	Bring it up
2	Primary cotton filter	7-30 days	Bring it up
3	Medium efficiency filter	2-4 months	Bring it up
4	High efficiency filter	6-8 months	Bring it up

Note:The above replacement cycle is for reference only, the actual replacement time depends on the working conditions.



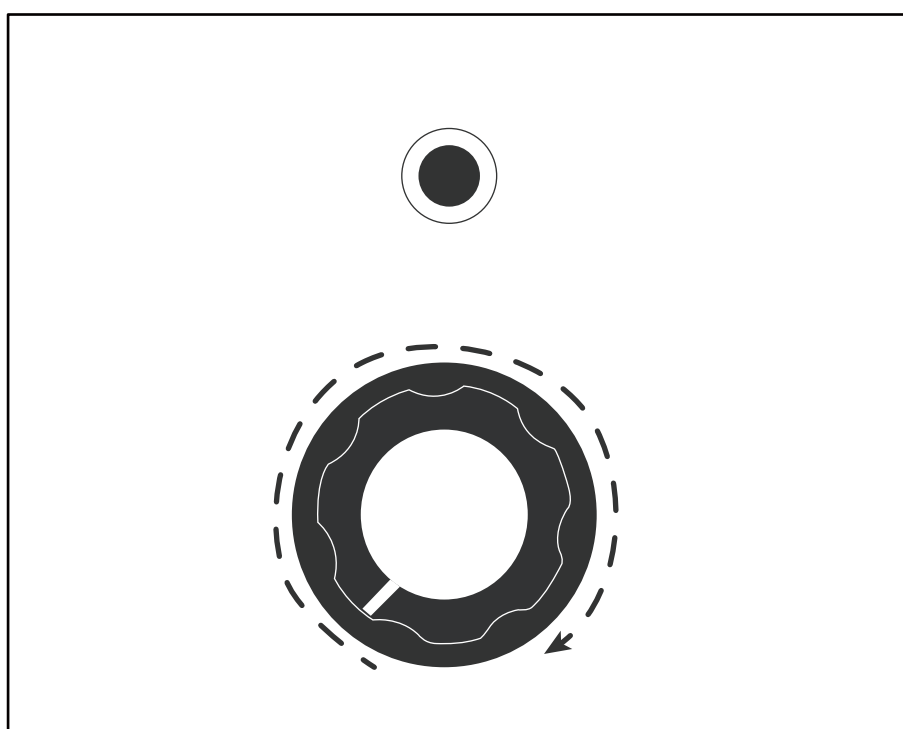
CONTROL ROTATION BUTTON

Plug the power cord into a 220V single-phase, three-pronged socket, and the device enters standby mode.

Twist the potentiometer clockwise, when the power starts to be energized, the run indicator lights up and the motor then starts to work. The knob travel is about 270° angle, 0° for power off shutdown, 270° for the highest speed of the motor.

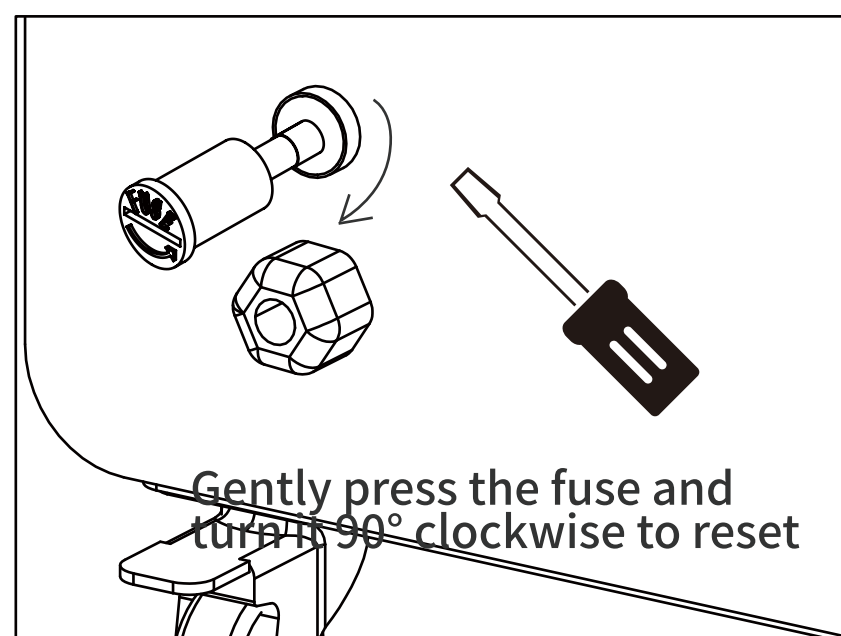
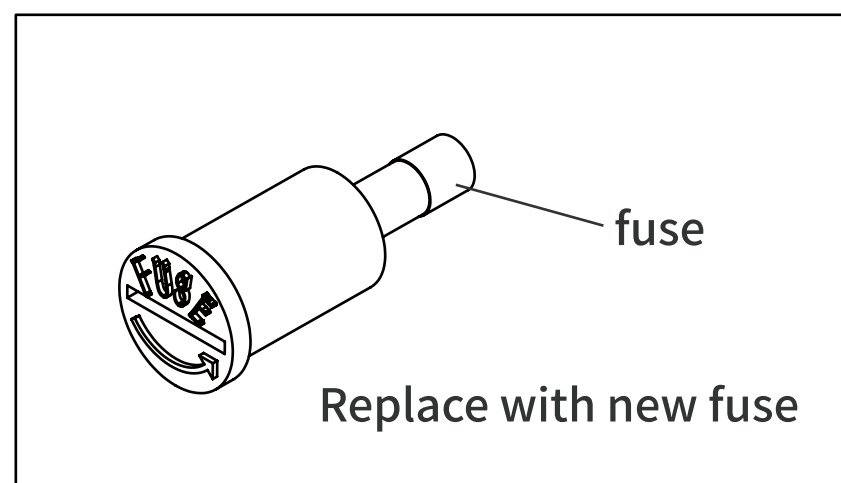
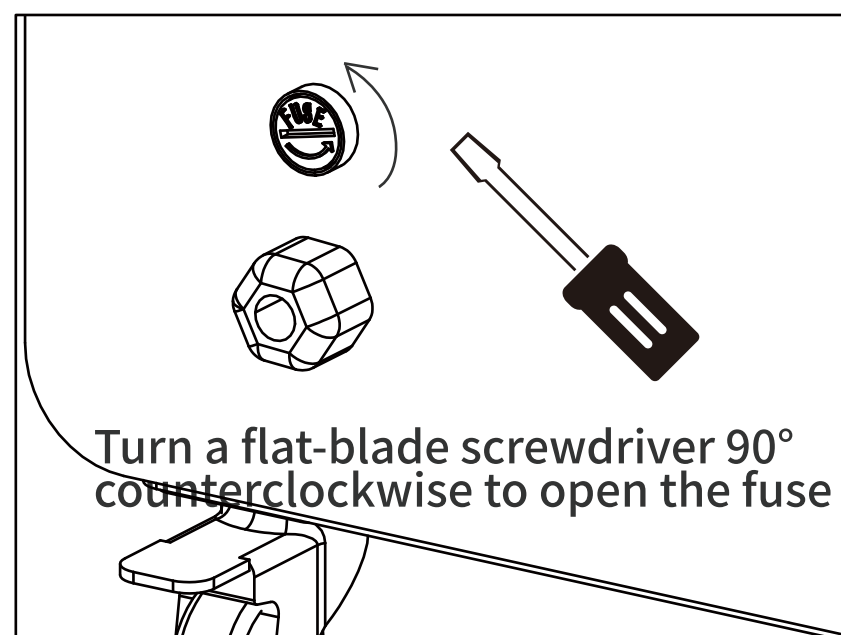
Users can adjust the motor speed of the equipment in real time according to the current demand of working conditions.

Note: Because of the need to meet the purification and filtration needs of different industries, the maximum air volume of this equipment may be too saturated for the current working conditions, the user to use, just adjust the motor speed to meet the purification and filtration of the suction can be done, this operation can also be avoided to produce excessive noise equipment.



FUSE REPLACEMENT

If the device is short-circuited and the fuse is damaged, Follow the steps below to replace the fuse.



FAQ AND SOLUTIONS

1: The system is still working, but the air volume is weak, and the suction force is significantly reduced.

Cause: The air intake is blocked, or there is foreign matter in the tubing, and the filter element reaches saturation failure, resulting in a blocking alarm.

Check: turn off the power supply, check whether there is any foreign matter blocking the air intake, and then check whether the air outtake is blocked. If the suction of the air compressor is normal, the filter element needs to be replaced.

2: The machine is normally energized, the motor starts slowly, and the speed is fast and slow.

Cause: Motor Driver Board Failure.

Tackle: Contact the manufacturer or dealer to replace the driver board.

3: Unscrewing the airflow control potentiometer, the machine does not operate

Check: ① Whether the socket has poor contact, if the power socket is intact; ② Fuses are not blown; ③ Is the potentiometer damaged; ④ Driver Board Failure; ⑤ Loose internal wiring.

Tackle: Contact factory or dealer for repair.

Be sure to cut off the power before checking and repairing the equipment !

WARRANTY

As for the warranty (free repair) of goods within the warranty period, it shall be implemented from the date of purchase.

1. The product can be returned to the factory for repair within the warranty period. Please show us this User's manual(Warranty) and purchase invoice.

2. From the date of purchase, the main unit is guaranteed for ____ years.
(Note: the filter element belongs to consumables and is not under warranty scope of repair)

3. Under one of the following circumstances, even within the warranty period, it can not be treated as a warranty, but it can be bank charge processing:

- I Damage caused by failure to use, maintain or store in accordance with the operating instructions;
- II Damage caused by incorrect operation, abnormal power supply, and falling;
- III Use of non-original cartridges or accessories and use without placing the cartridge;
- IV Damage caused by dismantling the machine without the consent of the manufacturer;
- V Failure to prove that the machine is within the valid warranty period;
- VI The information on the warranty certificate is inconsistent with or altered from the physical identification of the goods;
- VII Damage due to nuclear and chemical corrosion;
- VIII Damage due to natural measures (lightning, earthquake, flood, fire, and other natural disasters).

4. Before using this equipment, please strictly comply with the operating instructions, regular inspection and replacement of the cartridge, is strictly prohibited in high temperature (60 ° C and above), high humidity, flammable, explosive, corrosive and strong electrical environment. (60 ° C and above), high humidity, flammable and explosive, easy to corrode and strong electric environment, if this causes a safety accident or machine failure, the company has nothing to do. If this causes safety accidents or machine failure, the company has nothing to do with it.

V1.0 2024.04

